



[www.shilp.co.in](http://www.shilp.co.in)

# SHILP APERIA BUSINESS HUB





# Elevate your business to new heights



Corporate Office



Bank



IT Office



Insurance

Excelling in business is all about sensing and seizing sound opportunities. Shilp Aperia Business Hub on the happening Bopal-Ambli road, Ahmedabad offers you such an astonishing opportunity. Get ready to excel and elevate!



**Features** - 24X7 Security | Parking at ground floor and basement

Visitor parking | Entrance foyer | Fully automatic lifts | 24 hour water supply

# Amazing future for retail and other ventures



Apparel Shop



Gift Shop



Accessories Shop



Retail Shop

Shilp Aperia Business Hub is a promising mix of retail as well as office spaces. With its modern and futuristic outlook, the premises is set to be a new landmark of the area, ensuring astonishing future for any kind of retail ventures and office set ups.





Louvers Closed



Louvers Half Open

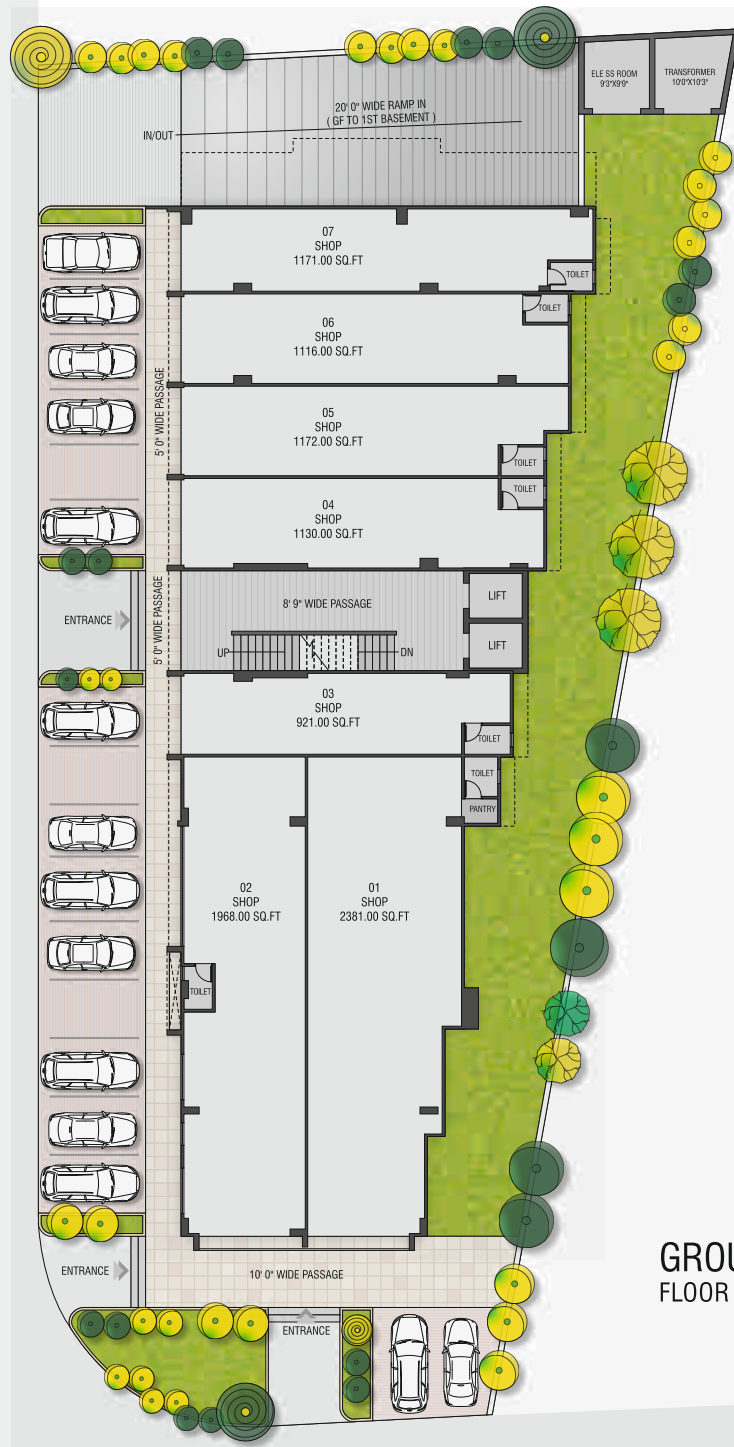


Louvers Fully Open

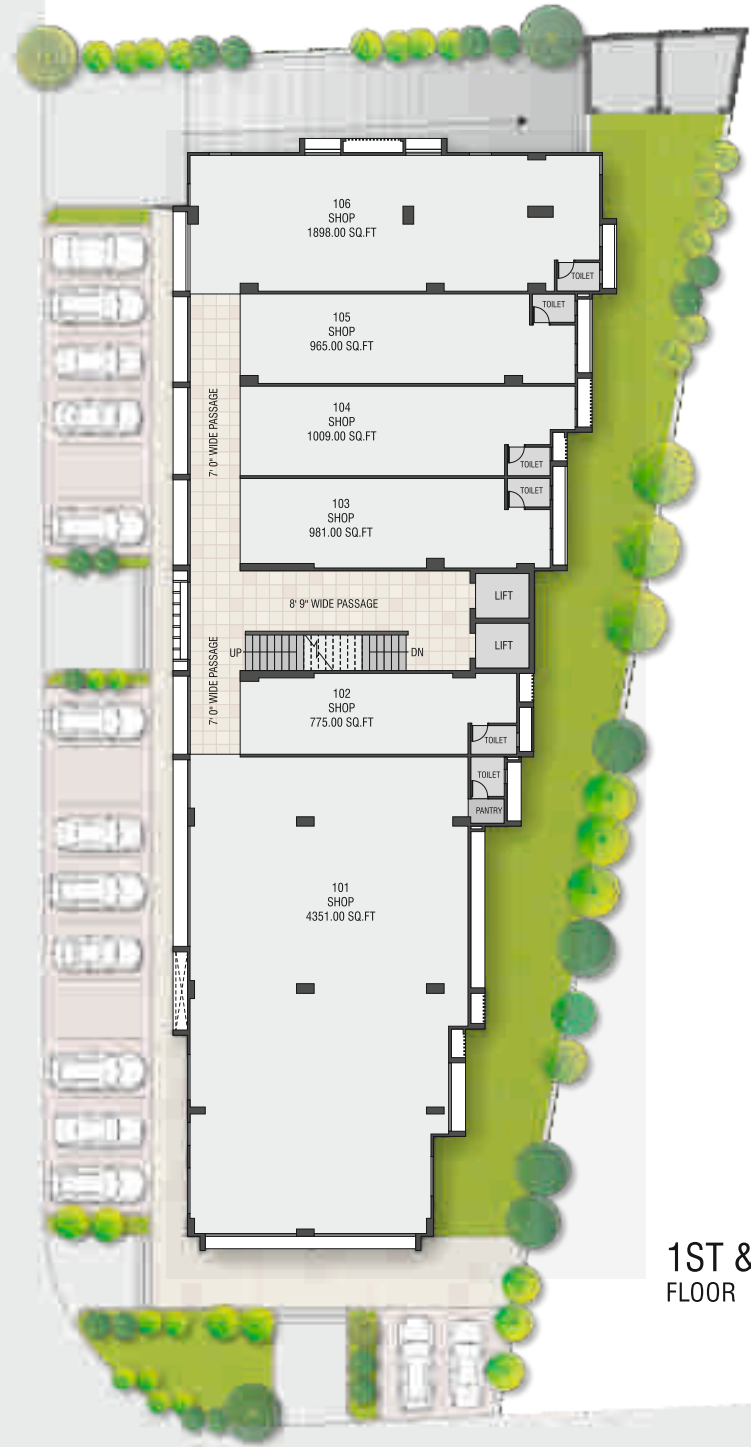


## Enigmatic Functionality

Keeping pace with the international trends, the building is designed to optimally use the natural light, while adding a touch of innovation to the elevation. The thoughtful and functional louvers across the elevation, also add an enigmatic identity to the building.



GROUND FLOOR PLAN



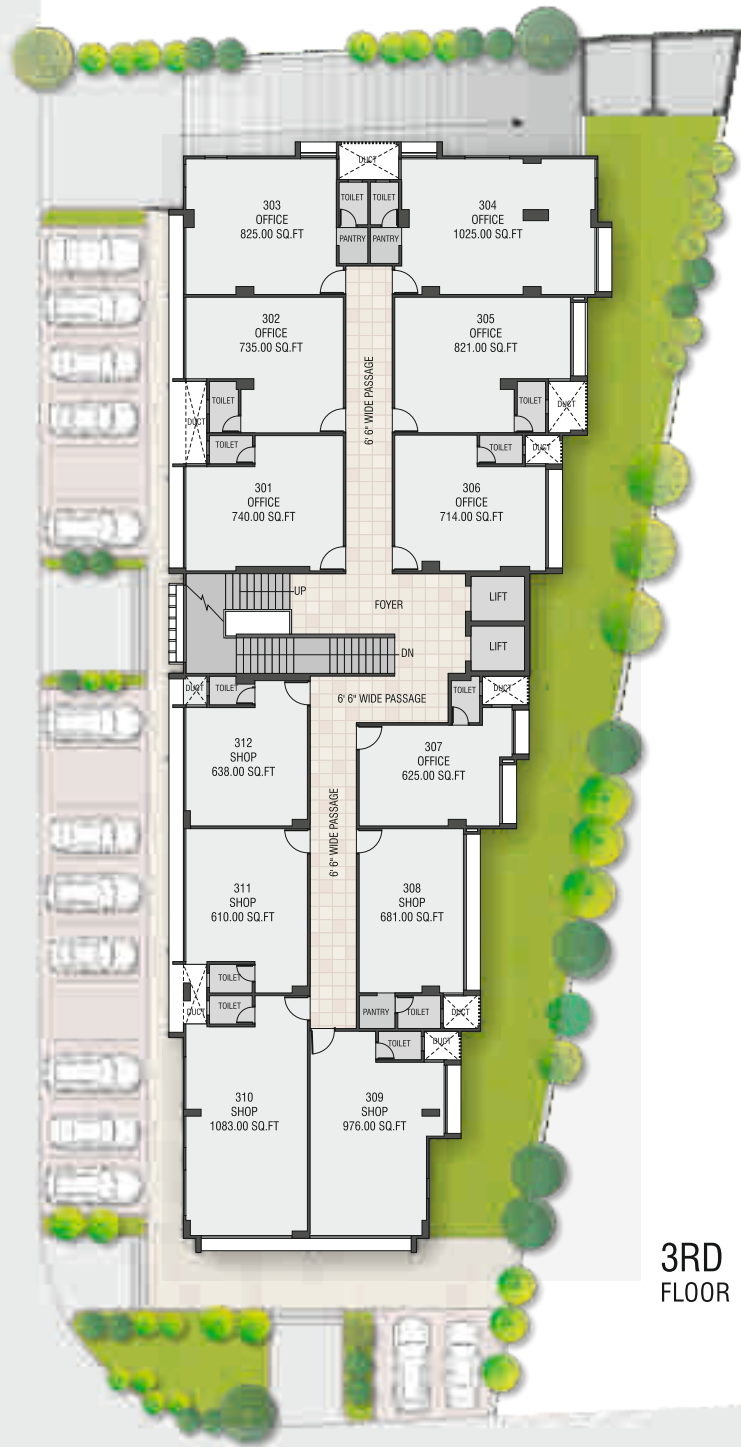
1ST & 2ND FLOOR PLAN



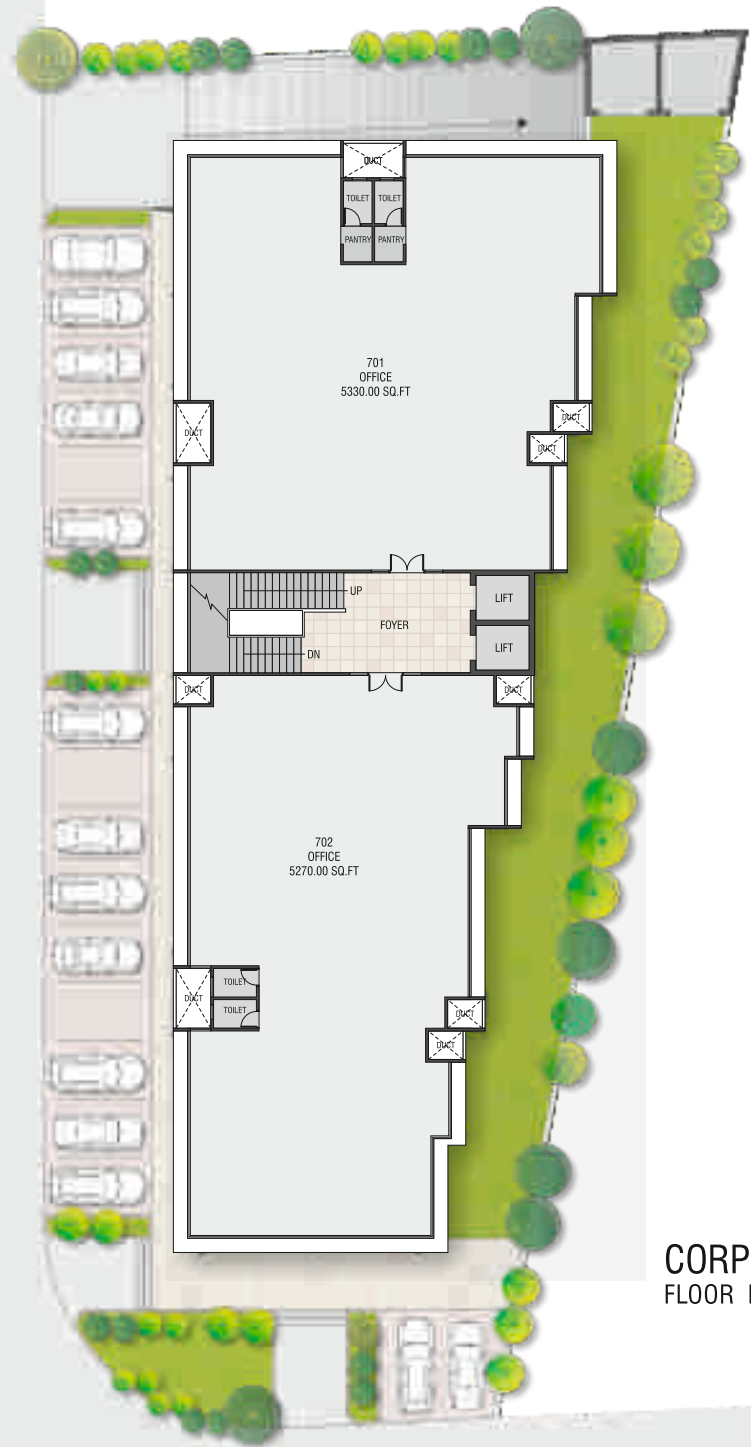
40.0 MT. WIDE ROAD



18.00 MT. WIDE ROAD



3RD  
FLOOR PLAN



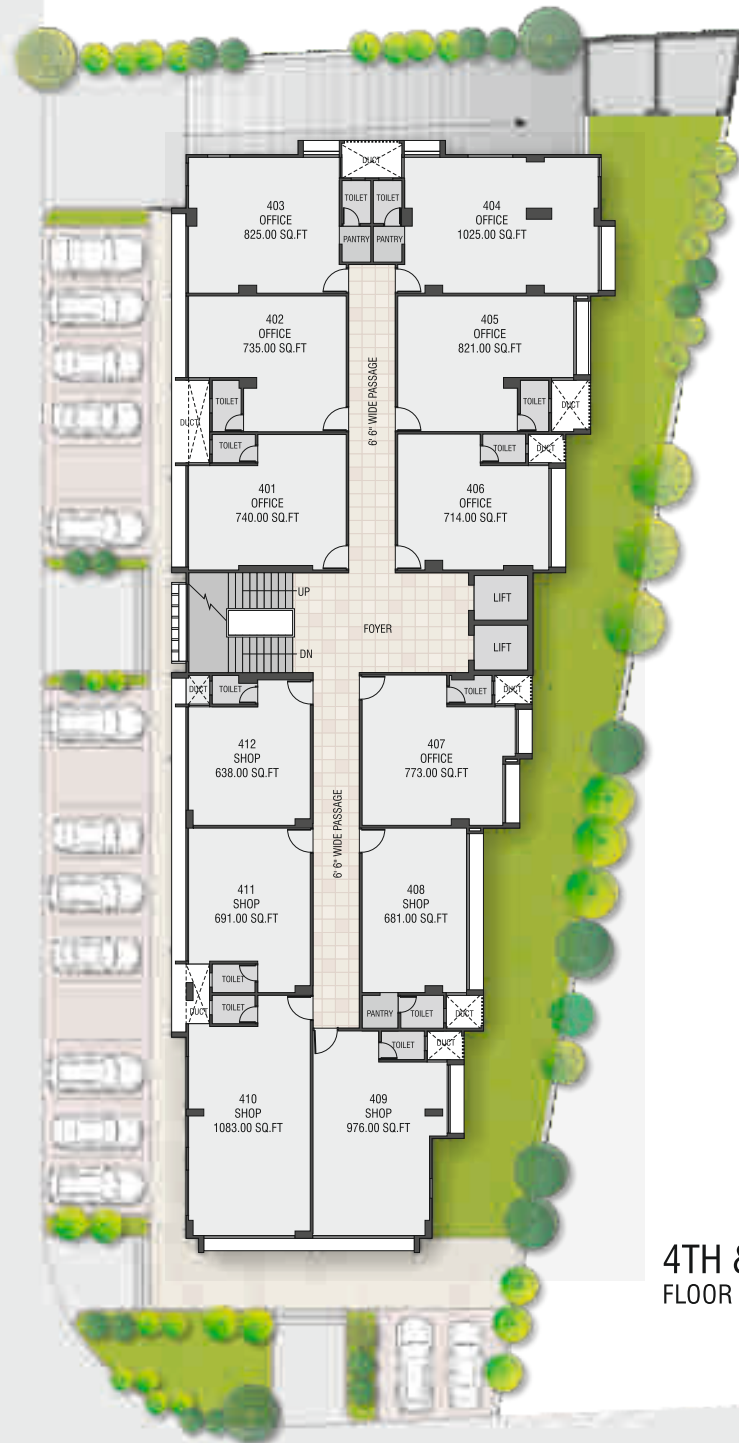
CORPORATE  
FLOOR PLAN



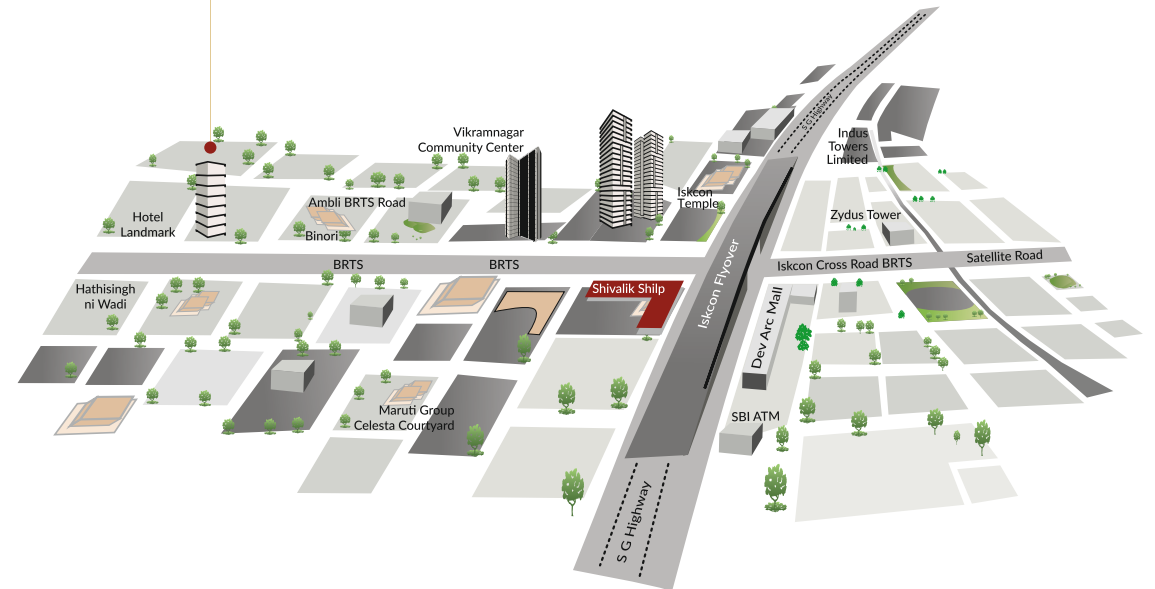
# SHILP APERIA

BUSINESS HUB

Near Landmark Hotel, Iscon Ambli Road, Ahmedabad



4TH & 7TH  
FLOOR PLAN



#### DEVELOPERS

Aaron Construction

#### ARCHITECT

ADS  
architect pvt. ltd.

#### BOOKING CONTACT

70430 01234  
98258 02504

#### NOTES

AEC, AMC charges, deposit & other Govt. charges shall be paid separately • Maintenance should be paid separately in advance • Right of any changes in dimensions, design & specifications reserved with the developer, which shall be binding for all members. • External changes not allowed • Stamp duty, registration fees, service tax & VAT on allotment and possession of unit shall be borne by purchaser applicable as prevailing law • Any additional liabilities due to change in/by laws, stamp duty, Govt. shall be borne by member • New rate will be applicable in case of delay in payments • Terms & conditions as per separate agreement • This brochure is meant only for information presentation & guidance purpose, it is not authorized document or agreement. They do not form the basis of any contract • Variations may occur as per local regulation and our policy of improvement • The dimensions shown in the brochure are approximate

